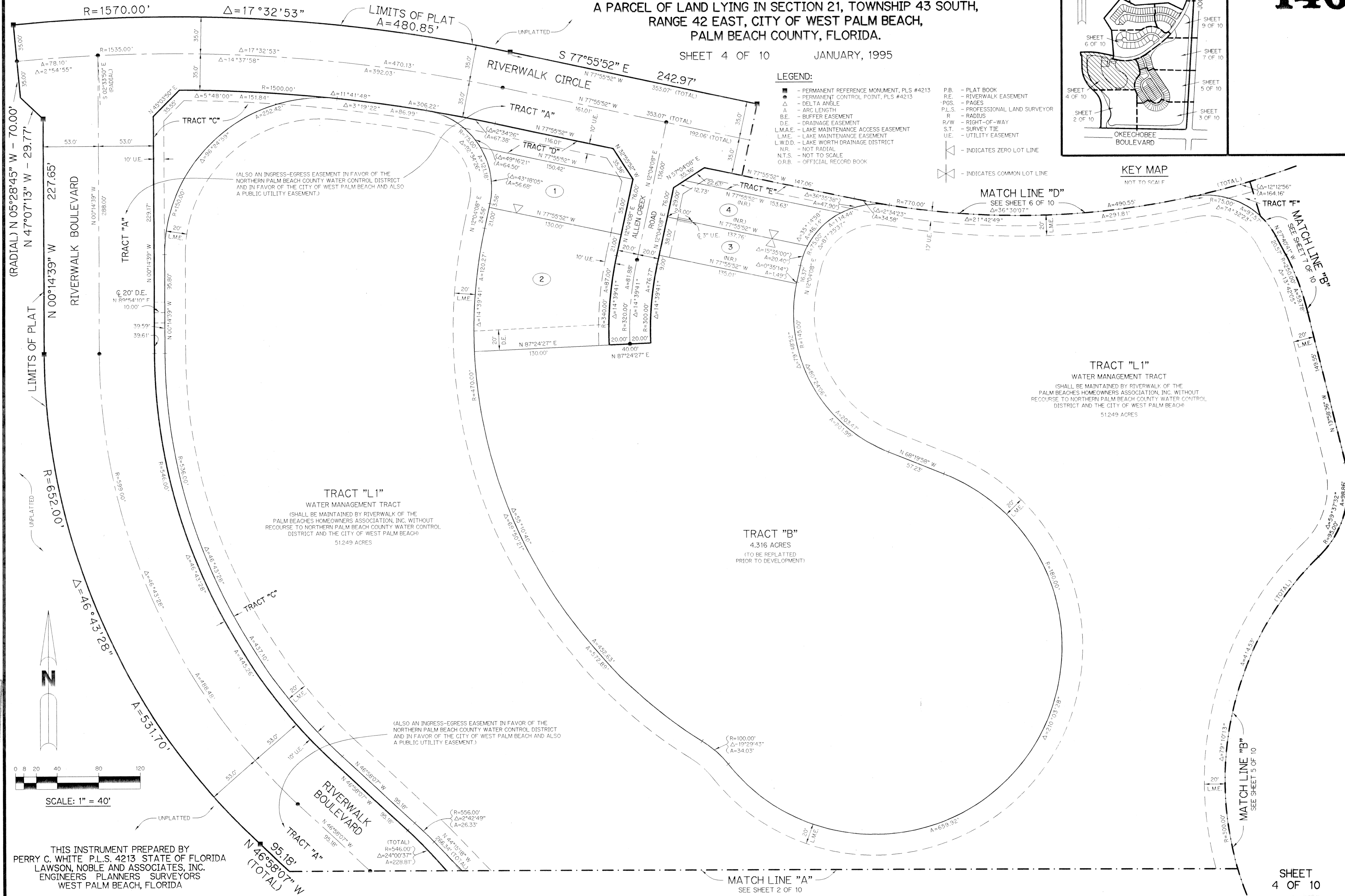
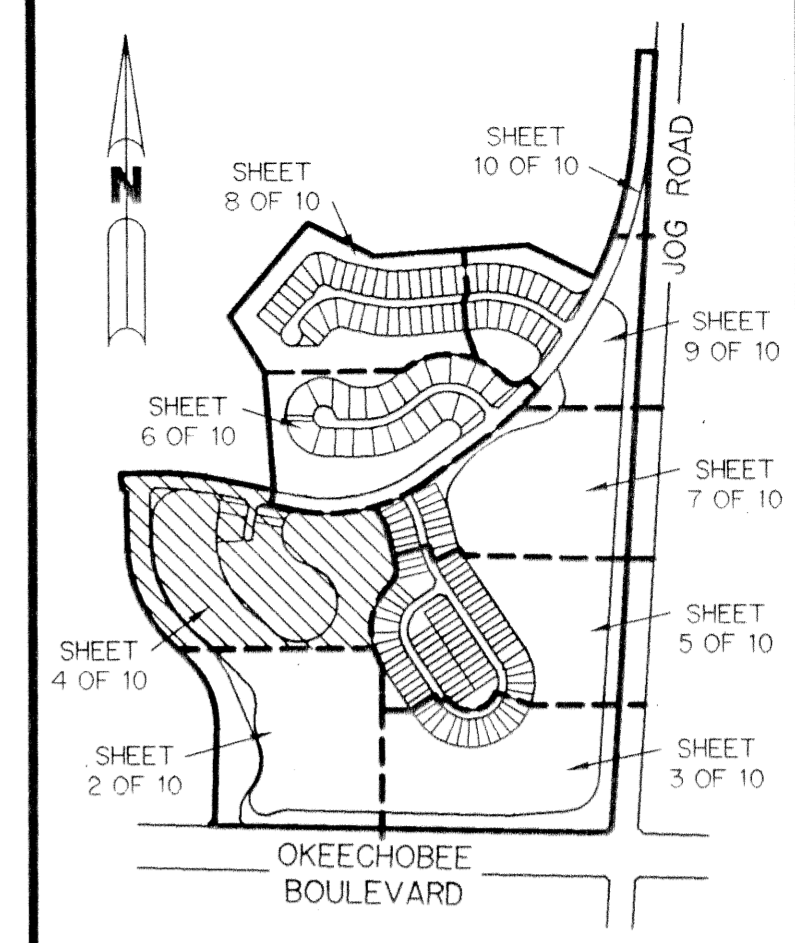


RIVERWALK - PLAT ONE

A PARCEL OF LAND LYING IN SECTION 21, TOWNSHIP 43 SOUTH,
RANGE 42 EAST, CITY OF WEST PALM BEACH,
PALM BEACH COUNTY, FLORIDA.

SHEET 4 OF 10 JANUARY, 1995

140



- LEGEND:**
- - PERMANENT REFERENCE MONUMENT, PLS #4213
 - - PERMANENT CONTROL POINT, PLS #4213
 - Δ - DELTA ANGLE
 - A - ARC LENGTH
 - BE - BUFFER EASEMENT
 - DE - DRAINAGE EASEMENT
 - L.M.A.E. - LAKE MAINTENANCE ACCESS EASEMENT
 - L.M.E. - LAKE MAINTENANCE EASEMENT
 - L.W.D.D. - LAKE WORTH DRAINAGE DISTRICT
 - N.R. - NOT RADIAL
 - N.T.S. - NOT TO SCALE
 - O.R.B. - OFFICIAL RECORD BOOK
 - P.B. - PLAT BOOK
 - R.E. - RIVERWALK EASEMENT
 - PGS. - PAGES
 - P.L.S. - PROFESSIONAL LAND SURVEYOR
 - R - RADIUS
 - R/W - RIGHT-OF-WAY
 - S.T. - SURVEY TIE
 - U.E. - UTILITY EASEMENT
 - ⊥ - INDICATES ZERO LOT LINE
 - ⊗ - INDICATES COMMON LOT LINE

KEY MAP
NOT TO SCALE

MATCH LINE "D"
SEE SHEET 6 OF 10
Δ=36°30'07"

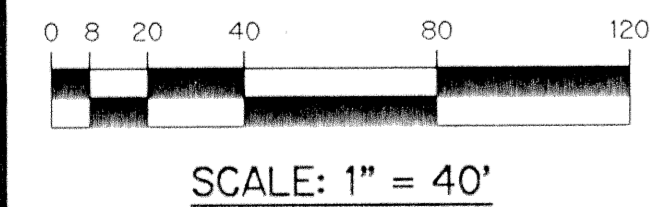
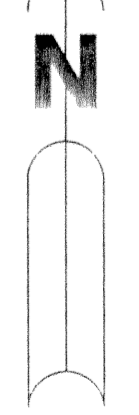
TRACT "L1"
WATER MANAGEMENT TRACT
(SHALL BE MAINTAINED BY RIVERWALK OF THE
PALM BEACHES HOMEOWNERS ASSOCIATION, INC. WITHOUT
RECOURSE TO NORTHERN PALM BEACH COUNTY WATER CONTROL
DISTRICT AND THE CITY OF WEST PALM BEACH
51.249 ACRES

TRACT "B"
4.316 ACRES
(TO BE REPLATTED
PRIOR TO DEVELOPMENT)

TRACT "L1"
WATER MANAGEMENT TRACT
(SHALL BE MAINTAINED BY THE
PALM BEACHES HOMEOWNERS ASSOCIATION, INC. WITHOUT
RECOURSE TO NORTHERN PALM BEACH COUNTY WATER CONTROL
DISTRICT AND THE CITY OF WEST PALM BEACH
51.249 ACRES

(ALSO AN INGRESS-EGRESS EASEMENT IN FAVOR OF THE
NORTHERN PALM BEACH COUNTY WATER CONTROL DISTRICT
AND IN FAVOR OF THE CITY OF WEST PALM BEACH AND ALSO
A PUBLIC UTILITY EASEMENT.)

(ALSO AN INGRESS-EGRESS EASEMENT IN FAVOR OF THE
NORTHERN PALM BEACH COUNTY WATER CONTROL DISTRICT
AND IN FAVOR OF THE CITY OF WEST PALM BEACH AND ALSO
A PUBLIC UTILITY EASEMENT.)



SUBDIVISION Riverwalk - Plat One
BOOK 74 PAGE 140
FLOOD MAP
ZONING
SE
PUD NAME C/NPB

THIS INSTRUMENT PREPARED BY
PERRY C. WHITE, P.L.S. 4213 STATE OF FLORIDA
LAWSON, NOBLE AND ASSOCIATES, INC.
ENGINEERS PLANNERS SURVEYORS
WEST PALM BEACH, FLORIDA

Mar 20, 1995 15:22:58 DWG Name: E:\3\4\0\W\161\H\6\PL04.DWG Updated By: GBP